



HEAVY VEHICLE SERVICING

INFORMATION

August 2018

SAFETY ALERT

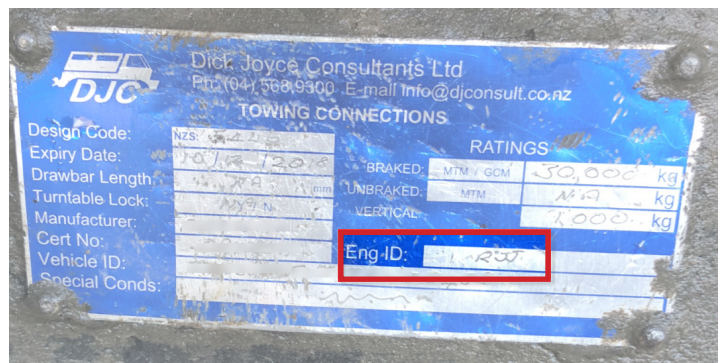
TOWING CONNECTIONS CERTIFIED BY RICHARD 'DICK' JOYCE (RJJ)

This safety alert has been issued by the NZ Transport Agency following the identification of issues during audits of towing connections (drawbeams, drawbars and towbars) certified by Dick Joyce (RJJ) of Tasman SV Consulting Ltd, Dick Joyce Consultants Ltd, and Seaview Engineering Ltd.

Issues have been identified in drawbeam, drawbar and towbar certifications by Dick Joyce (RJJ). Independent reviews have identified that some were not adequately designed for the loads to which they had been certified or have been recertified beyond their viable design life. Subsequent investigations have identified further issues with towing connection certifications he has issued.

We are currently undertaking a detailed analysis of files relating to towing connections certified by Dick Joyce (RJJ). In the meantime, **we recommend all owners and operators of vehicles with drawbeams, drawbars or towbars certified to NZS 5446 and NZS 5467 by Tasman SV Consulting Ltd, Dick Joyce Consultants Ltd, or Seaview Engineering Ltd check the certification plate for the engineer ID 'RJJ' (see examples). If present, have the towing connection cleaned and inspected daily for signs of cracks or other failures. If any such signs are found, the vehicles' use as a combination vehicle must be discontinued immediately.**

The Transport Agency has revoked the certifications of several towing connections where there were serious safety concerns, and it's possible that there will be further revocations as this investigation continues.



To identify a certification by Dick Joyce, look for 'RJJ' in the engineer (ENG) field.

While the focus of this alert is primarily on towing connections, an inspection of all certifications (eg log bolsters, crane attachments, load anchors, chassis modifications, etc.) by Dick Joyce (RJJ) is recommended in addition to the usual walk-around inspection. If any failures are identified, please contact the Transport Agency (see green box below).

This alert only applies to components certified by RJJ. Certifications carried out by other certifiers at Tasman SV Consulting Ltd, Dick Joyce Consultants Ltd, and Seaview Engineering Ltd are NOT subject to this safety alert. However, all towing connections should be regularly checked during normal walk-arounds and routine maintenance.

Action required

Review your fleet. If Dick Joyce Consultants Ltd, Tasman SV Consulting Ltd, or Seaview Engineering Ltd was the company that provided certification of any drawbeams, drawbars or towbars then follow the instructions below:

1. Check for initials RJJ on the component's certification plate. All 'RJJ' towing connections should be thoroughly cleaned and carefully inspected daily for signs of cracks or failure, paying particular attention around any welded or bolted areas.
2. If any signs of cracks or other failure are present on the towing connections, the vehicles' use as a combination vehicle must be discontinued until the components have been replaced with certified components.
3. Repeat these inspections regularly (daily or before each trip) as cracks can appear quickly.
4. Do not attempt to repair any crack; this won't address the root cause of the failure.
5. Feedback regarding cracks or other failures on any components certified by Dick Joyce (RJJ) and any other enquiries or questions related to this should be directed to the Transport Agency on 0800 699 000.